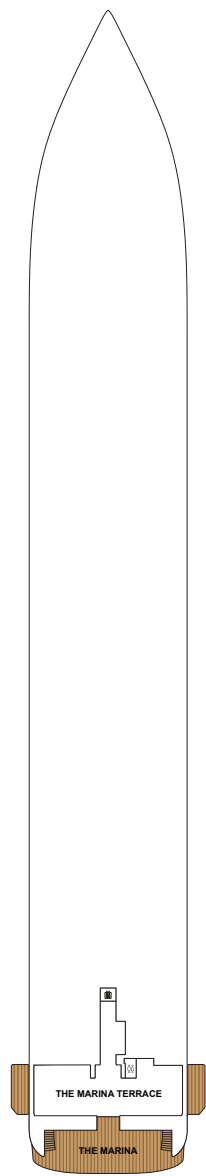
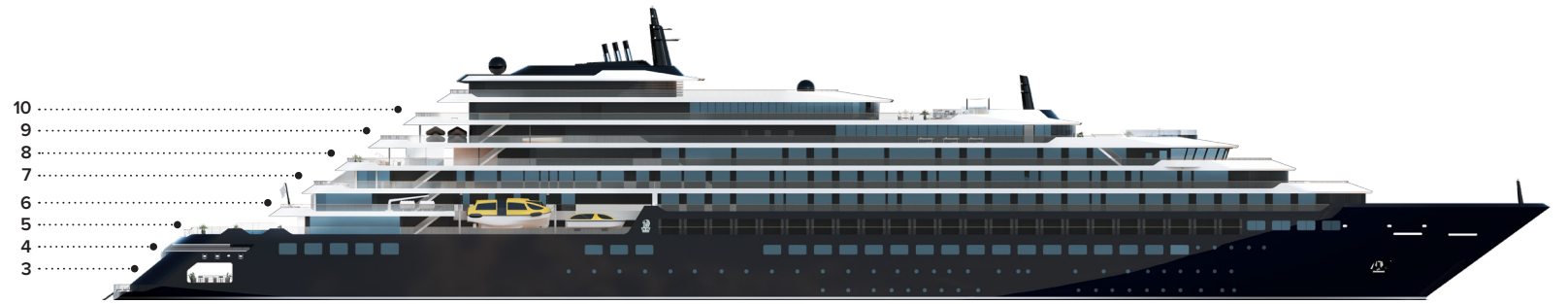
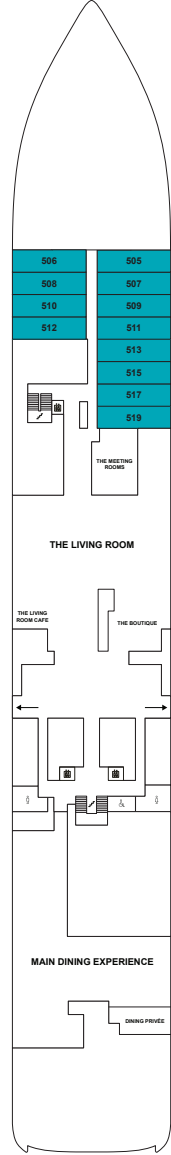




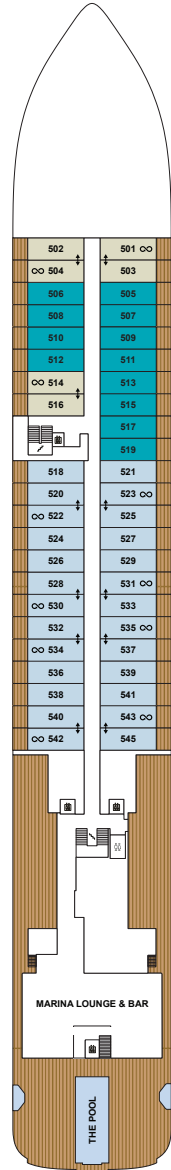
THE RITZ-CARLTON YACHT COLLECTION



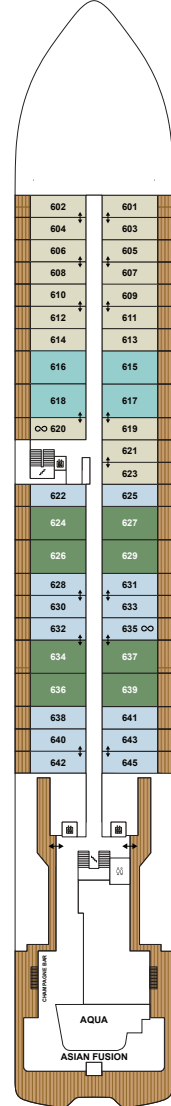
DECK 3
THE MARINA TERRACE
THE MARINA



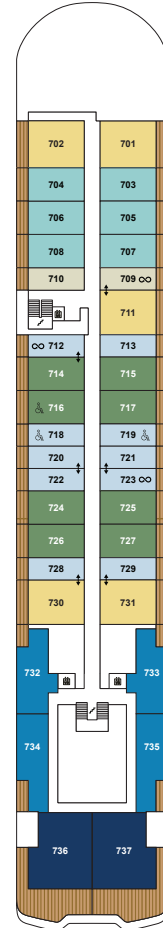
DECK 4
THE MEETING ROOMS
THE LIVING ROOM
THE BOUTIQUE
THE LIVING ROOM CAFE
MAIN DINING EXPERIENCE
DINING PRIVÉE
505 – 519 LOWER LEVEL



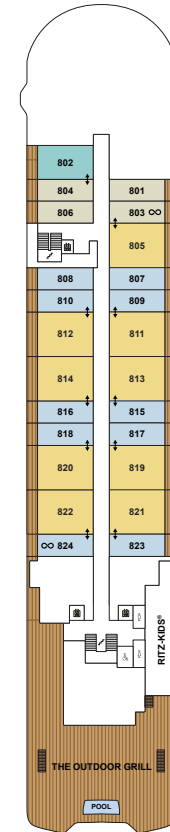
DECK 5
MARINA LOUNGE & BAR
THE POOL
SUITES 501 – 545



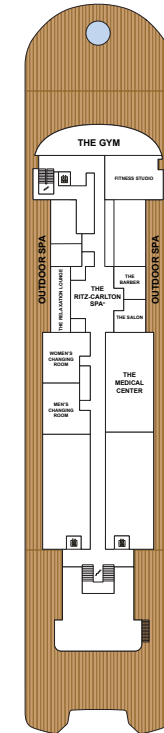
DECK 6
CHAMPAGNE BAR
AQUA
ASIAN FUSION
SUITES 601 – 645



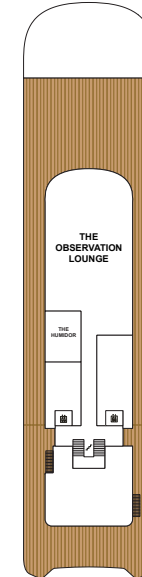
DECK 7
SUITES 701 – 737



DECK 8
THE OUTDOOR GRILL
RITZ-KIDS®
SUITES 801 – 824



DECK 9
THE GYM
FITNESS STUDIO
SPA TREATMENT ROOMS
THE RITZ-CARLTON SPA®
THE BARBER /
THE SALON
THE MEDICAL CENTER



DECK 10
THE OBSERVATION LOUNGE
THE HUMIDOR

SUITE CATEGORY

- THE OWNERS' SUITES _____
- THE VIEW SUITES _____
- THE LOFT SUITES _____
- THE GRAND SUITES _____
- THE SIGNATURE MID SUITES _____
- THE SIGNATURE SUITES _____
- THE TERRACE MID SUITES _____
- THE TERRACE SUITES _____
- ACCESSIBLE SUITES _____
- CONNECTING SUITES _____
- CONVERTIBLE SUITES* _____

YACHT SPECIFICATIONS

- GUEST CAPACITY _____ 298
- OFFICER AND CREW _____ 246
- TOTAL SUITES _____ 149
- TONNAGE _____ 26,500
- LENGTH _____ 624 FEET / 190 METERS
- WIDTH _____ 78 FEET / 23.8 METERS
- GUEST DECKS _____ 8
- BUILT _____ 2019
- YACHT'S REGISTRY _____ MALTA

**Select Terrace Suites have the ability to convert into an expanded living and dining area or remain a second bedroom when connected to the adjacent suite.